

Medi-Kool (tm) USB Download Instructions

Revision 2.0 Thursday, 22 December 2016

Mermaid Manufacturing

2651 Park Windsor Drive, Suite 203

Fort Myers, FL 33901

239-418-0535

www.mmair.com



WINDOWS 7 & OLDER DEVICES

Anything OLDER than a Windows 7 computer: Only install the USB DRIVER, then proceed to step 1 of the application instructions.

WINDOWS 7 & NEWER DEVICES

Windows 7 computers & NEWER: Install the USB DRIVER and the HYPERTERMINAL applications, then proceed to step 1 of the application instructions.

Medi-Kool (tm) LOG Disclaimer

Once every minute, the Medi-Kool (tm) unit records: date, time, set temperature limit and measured temperature. This data is stored in a temporary volatile memory for up to 44 minutes, after the volatile memory is filled up with records, the data is written to a permanent non-volatile memory, also known as a FLASH memory. Each 44-minute segment of records is called an LOG entry.

Enough permanent FLASH memory is accommodated to keep 31 days of LOG data.

The unit will keep data in the temporary memory for up to 30 seconds after power is disconnected to the unit. After 30 seconds, the temporary memory is lost and the next LOG entry (max 44 minutes) in the FLASH memory will have non-valid records.

The LOG data can be downloaded from the unit to a computer using a USB port located in the front of the control panel. This type of cord can be found used in most printers and sold in the electronics department at most stores.

For this process, the operator needs to install a USB driver AND HyperTerminal program (for windows 7 & newer computers) to extract the data from the board.

The downloaded LOG data will be stored on the computer in a file location of your choice as a file that can be opened in Excel or as a Text file in another program.

Note, the downloaded data can be missing data records for up to 44 minutes, this due to the entry held in the temporary memory is not yet written to the FLASH memory. This temporary held entry will be available for download after it is stored in the FLASH memory.

USB DRIVER INSTRUCTIONS

For the control board to communicate with the computer, a driver must be installed on the computer to make the connection between the board and computer.

Click the link below to download the USB DRIVER program.

http://mmair.com/wp-content/uploads/2016/09/CDM21218_Setup-1.zip

Click “save” & “open” once the program is completely downloaded.

This will open a new window which displays a folder holding an application called: CDM2128_Setup

Double click the application, select “yes” when the window prompts you to “allow this application to make changes for your device”.

This will then open the FTDI CDM DRIVERS window

Select “extract”

Select “next”

Click the bubble “I accept this agreement”, then click “next”

In the final box, click “finish” to finish the installation

IF YOU HAVE ANYTHING **OLDER THAN A WINDOWS 7 COMPUTER**: MOVE ON TO STEP 1 OF THE APPLICATION INSTRUCTIONS

IF YOU HAVE A **WINDOWS 7 COMPUTER OR NEWER**: PROCEED TO THE HYPERLINK DOWNLOAD INSTRUCTIONS ON THE NEXT PAGE

HYPERTERMINAL APPLICATION

WINDOWS 7 & NEWER COMPUTERS:

For the USB DRIVER to the control board, a HyperTerminal application must be installed on the computer to complete the connection from the board to the computer.

Click the link below to download the HYPERTERMINAL APPLICATION.

<http://mmair.com/wp-content/uploads/2016/12/HyperTerminalWin7.zip>

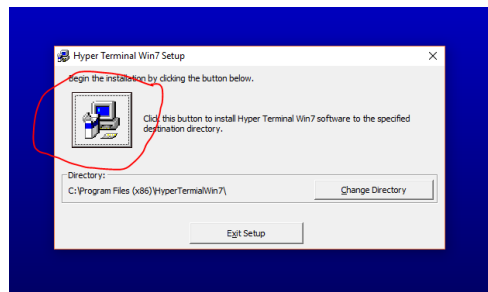
Click “save” & “open” once the program is completely downloaded

You will see 3 programs available in the file folder

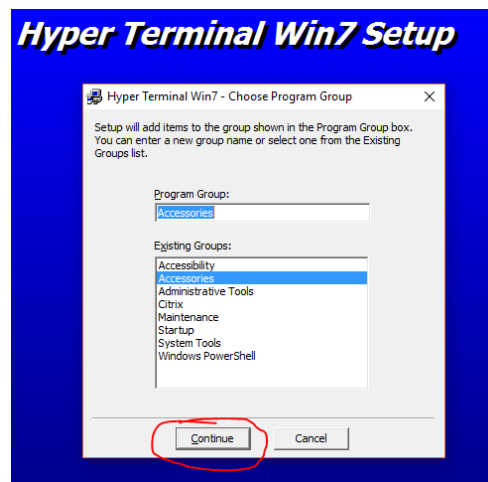
Double click the “setup” program that has the Type labeled “application” in the description, select “yes” when the window prompts you to “allow this application to make changes for your device”.

Click “OK”

Select the computer icon



Next, leave the default settings with the location highlighted as “accessories”
Click “continue”



Finally, select “OK”

APPLICATION INSTRUCTIONS

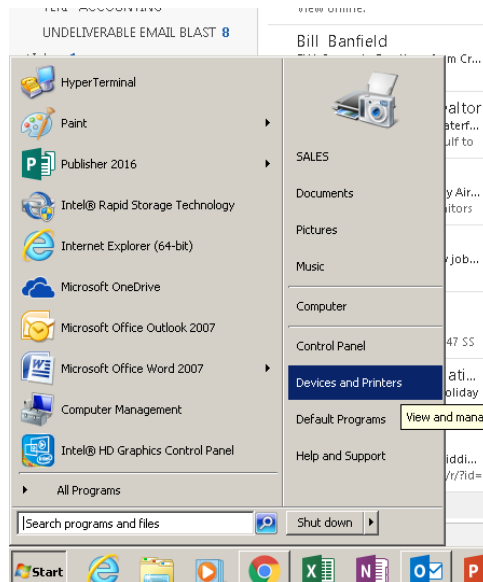
STEP 1:

Connect the USB plug to the control board (ensure the control board is powered on). Plug the other side of the USB into your computer or laptop.

STEP 2:

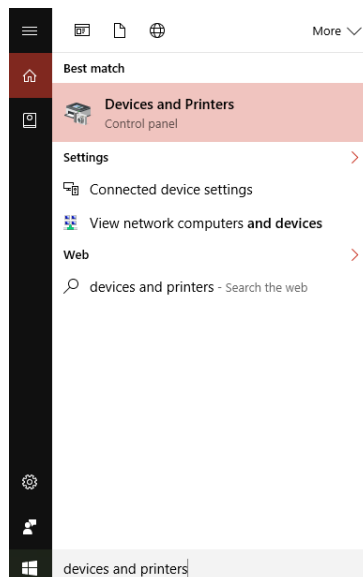
FOR ANYTHING OLDER THAN A WINDOWS 10 OPERATING SYSTEM:

Open the start menu and locate the “Device and Printers” on the right side of the start menu.



FOR WINDOWS 10 OPERATING SYSTEMS:

Search for “Device and Printers” in the search bar on the stat menu.



STEP 3:

Select Devices and Printers and ensure the section under “Unspecified” shows a file name under the device. It could be something like “FT232R USB UART” (will only be similar).

IF THE DEVICE UNDER “UNSPECIFIED” SAYS “UNKNOWN” CONTACT MERMAID MANUFACTURING IMMEDIATELY AND ASK TO SPEAK TO PURCHASING ABOUT THE CONTROL BOARD USB DOWNLOAD 239-418-0535

STEP 4:

Right click the device under “Unspecified” and select “Properties”

On the tab at the top, click “Hardware”

Under Device Functions:

Make note of which “COM” port the device is being stored.

For example, it will say “USB Serial Port (COM 3)” – remember “COM 3” for future use.

Click “cancel” and close out of your Devices and Printers folder.

STEP 5:

FOR ANYTHING OLDER THAN A WINDOWS 10 OPERATING SYSTEM:

Select Start in the bottom left -> All Programs -> Accessories Folder -> HyperTerminal

FOR WINDOWS 10 OPERATING SYSTEMS:

Search for “HyperTerminal” in the search bar on the start menu.

Check off the box “Don’t ask me this question again” and select “NO”

THE LOCATION STEP WILL ONLY HAVE TO BE DONE ONCE WHILE USING THIS PROGRAM

Under the Location Information box, be sure that the Country/Region is correct.

Fill in the correct “Area Code” under the “What area code (or city code) are you in now”

Click “OK”

Click “Ok” on the “Phone and Modem” box

HyperTerminal will prompt you to “install a modem before you can make a connection”,

SELECT “NO”.

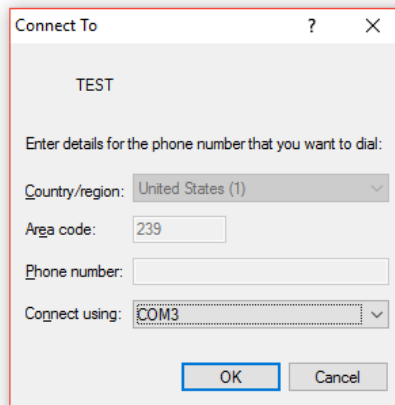
THE LOCATION STEP WILL ONLY HAVE TO BE DONE ONCE WHILE USING THIS PROGRAM

A new box called “Connection Description” will appear, fill in the “name” field with whatever name you choose for that specific control board.

For example, if this board will ALWAYS be on Ambulance 1, Station 6. You can call the “name” Amb. 1 Stat 6, or whatever you would like.

Once the “name” is filled in, click “OK”

Remembering what “COM” port from Step 3 & 4, be sure the “Connect Using:” has selected the correct COM # from steps 3 & 4



Connect To ? X

TEST

Enter details for the phone number that you want to dial:

Country/region: United States (1) v

Area code: 239

Phone number:

Connect using: COM3 v

OK Cancel

Select the correct COM and press “OK”

After the COM port is select click *Configure...* located right under the COM port field. Select the parameters as follows:

Bits per second: 115200
Data bits: 8
Parity: None
Stop bits: 1
Flow control: None



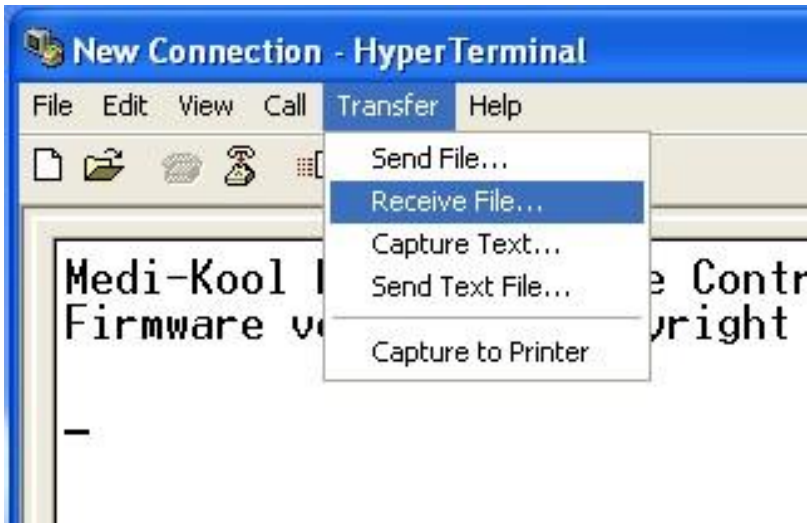
Click Apply and then OK.

An empty terminal screen will be shown.

LOG Data Download

To download the LOG data from the Medi-Kool (tm) unit to the computer, in the Hyper Terminal menu select:

Transfer -> Receive File...



Select the directory where you want the downloaded LOG file to be stored and select Kermit as the receiving protocol to be used.



Press Receive to start receiving the LOG file on the computer. The software will now wait for the transfer of data from the Medi-Kool (tm) unit to begin.

On the Medi-Kool (tm) Control Board, enter the menu by pushing the navigation button once, if needed enter the code, then, by turning the navigation button in either direction select *<Transmit LOG->* and press down the navigation button once more. This will start the transfer of the current LOG data stored in the unit to the computer.

In the Hyper Terminal on the Windows computer a status window will be shown indicating the download progress.

Kermit file receive for New Connection

Receiving:

Storing as:

Packet: File size:

Retries: Total retries: Files:

Last error:

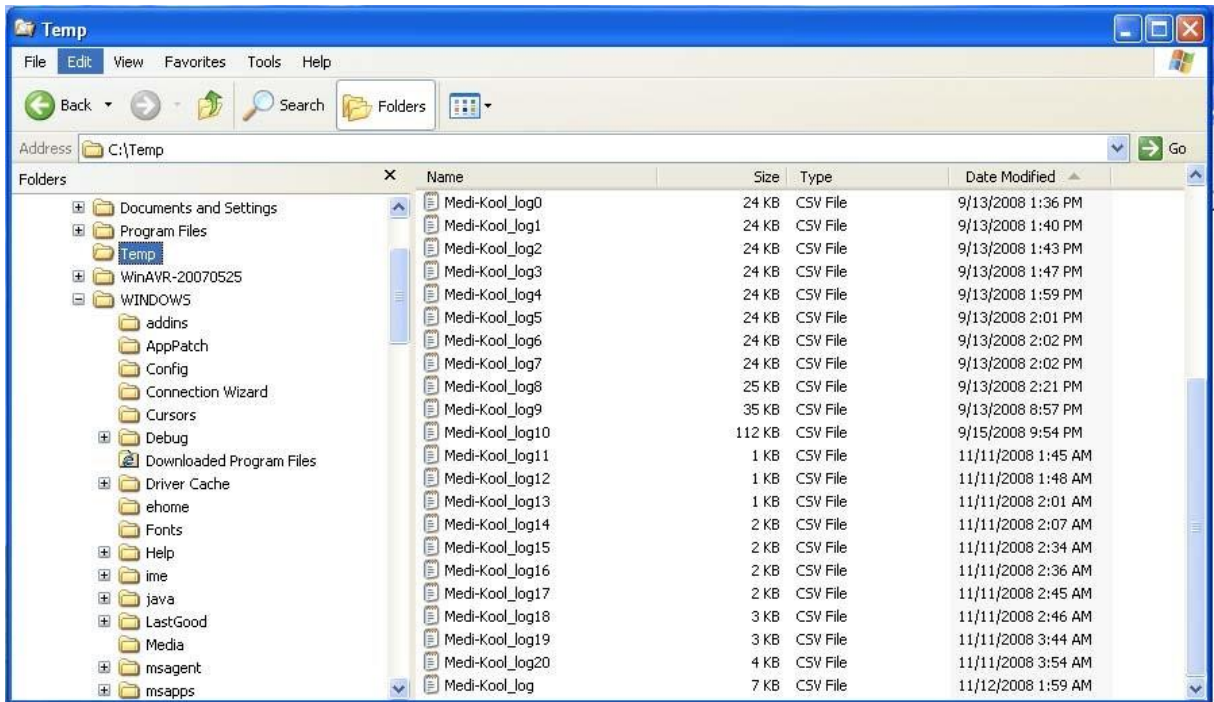
File:

Elapsed: Remaining: Throughput:

LOG File

After the download is completed the LOG data file will show up in the directory selected during the transfer setup. The file will be named *Medi-Kool (tm)_log.csv*.

Any older LOG files stored in the same directory will be numbered as: *Medi-Kool (tm)_log#.csv.*, where # is a number. The more recent the file was created, the higher the number.



The log file is stored in CSV (Comma Separated Values) format and can be viewed in a text editor or imported to applications like Excel.

Excel is an automatic download for this application.

The LOG file consists of four columns per row, each column is separated by commas. The first line in the file is a header and describes the fields. The column data fields in each row is constructed as:

```
date, time, set temperature limit, measured temperature
```

The format for the date is: *mm/dd/yy*, the time is in 24h format as: *hh:mm:ss*, and the temperature is shown in degree Fahrenheit.

```
Date,Time,Set Temp.,Meas. Temp.
```

```
09/12/08,19:53:00, 76, 81
09/12/08,19:54:00, 76, 81
09/12/08,19:55:00, 76, 81
09/12/08,19:56:00, 76, 81
09/12/08,19:57:00, 76, 80
09/12/08,19:58:00, 76, 80
09/12/08,19:59:00, 76, 80
09/12/08,20:00:00, 76, 79
09/12/08,20:01:00, 76, 79
09/12/08,20:02:00, 76, 79
09/12/08,20:03:00, 76, 79
09/12/08,20:04:00, 76, 78
09/12/08,20:05:00, 76, 78
09/12/08,20:06:00, 76, 78
09/12/08,20:07:00, 76, 78
09/12/08,20:08:00, 76, 78
09/12/08,20:09:00, 76, 78
09/12/08,20:10:00, 76, 77
09/12/08,20:11:00, 76, 77
09/12/08,20:12:00, 76, 78
09/12/08,20:13:00, 76, 79
09/12/08,20:14:00, 76, 79
09/12/08,20:15:00, 76, 80
09/12/08,20:16:00, 76, 81
09/12/08,20:17:00, 76, 81
09/12/08,20:18:00, 76, 81
09/12/08,20:19:00, 76, 81
09/12/08,20:20:00, 76, 81
09/12/08,20:21:00, 76, 81
09/12/08,20:22:00, 76, 82
09/12/08,20:23:00, 76, 82
09/12/08,20:24:00, 76, 80
09/12/08,20:25:00, 76, 80
09/12/08,20:26:00, 76, 79
09/12/08,20:27:00, 76, 79
09/12/08,20:28:00, 76, 79
09/12/08,20:29:00, 76, 79
09/12/08,20:30:00, 76, 78
09/12/08,20:31:00, 76, 79
```